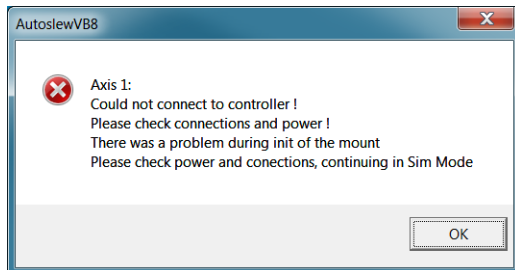


## This manual can help you, if Autoslew is not able to establish a connection to your DDM mount any more.

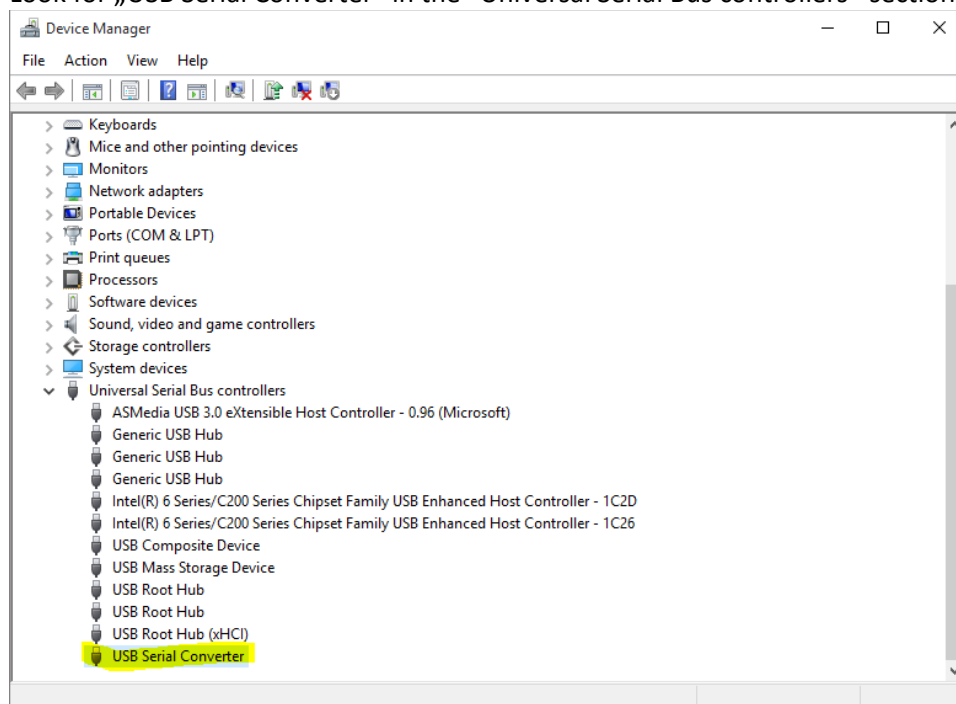
When you start Autoslew an error message like this will appear.



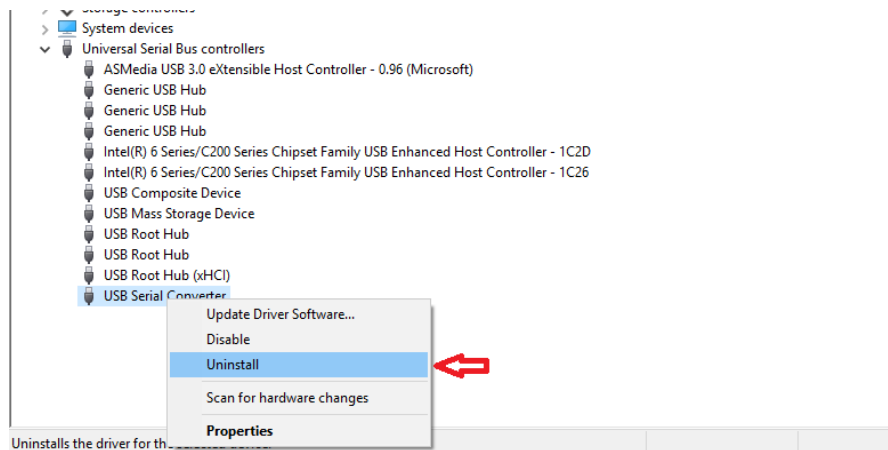
This problem can occur when Windows installs a new USB driver as part of the automatic Windows Update. This new driver is not compatible with the ASA mounts/Autoslew.

So you need to uninstall the new driver and reinstall the previous driver without an active internet connection.

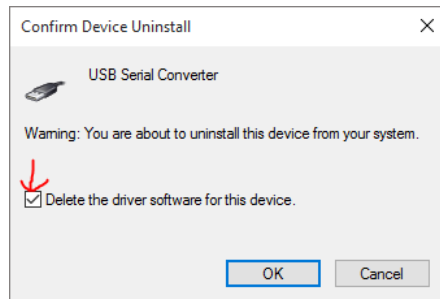
1. Make sure that your mount is connected to your computer and the mount's power supply is on. Then open the Windows device manager
2. Look for „USB Serial Converter” in the “Universal Serial Bus controllers”-section.



Right-click on the “USB-Serial Converter” and press Uninstall



Check the box for “Delete the driver software for this device”



3. Disconnect the USB connection between DDM mount and Computer
4. Disconnect your internet connection.
5. Install the previous driver by executing the file *CDM20814\_Setup.exe*. You can find it in the following directory:  
*C:\Program Files (x86)\Autoslew*
6. Connect the mount's USB cable again. (do not connect to the internet yet)
7. Now Windows loads the right USB driver
8. Start Autoslew: it should connect to the DDM mount without any problems now.
9. Now you can establish your internet connection again.